

# Fit-up Plate for Matching MK Floor Frame with 3M Data Socket

**Mastering & Innovation**  
Electromechanical Solutions Est.  
P.O.Box 20303 Amman 11118 JORDAN  
Tel. Fax 962 6 4627075  
Mobile 962 79 6624708  
e-mail: maher\_okush@hotmail.com

Please keep this leaflet for future reference

**M&I (Mastering & Innovation Est.)** has developed and manufactured several complex customized products for the local market in the field of wiring devices. In this leaflet we will be elaborating installation steps for the “**MK-3M fit-up**” unique product / solution. Please refer to (Figure 1) to familiarize yourself with the main parts to be matched:

- MK Euro frame for floor mounting. In our case we will be using 1-gang standard version of floor frame BSS (brushed stainless steel finishing) to comprise one or two data outlets.
- The “MK-3M fit-up” steel part manufactured by **M&I** to match MK frame with 3M data socket.
- Volition RJ45 Socket integrated to Cat7 or Cat 6a data cable to form what so called data outlet.

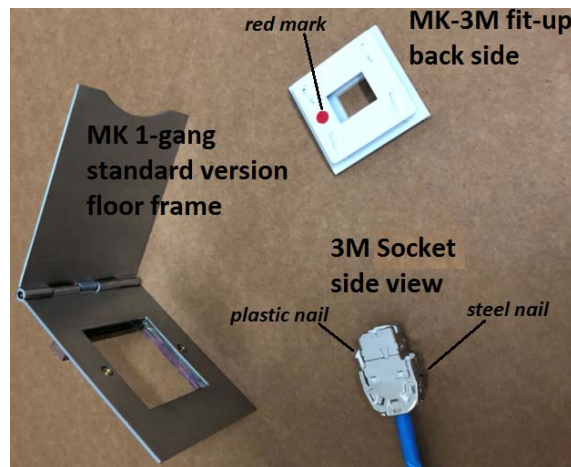


Figure 1.

**STEP#1-** To start assembly process, arrange the parts as shown in (Figure 2) below:

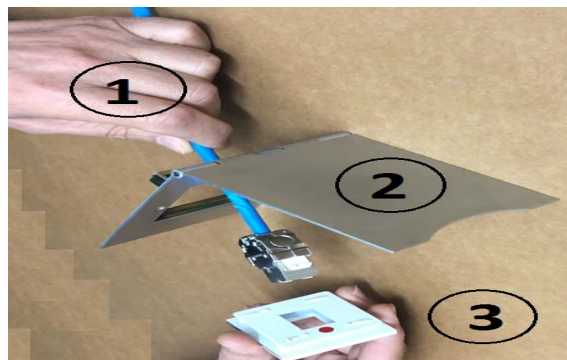


Figure 2.

**STEP#2-** The “MK-3M fit-up” has two plates, (thick one which is the front finishing, and thin one dedicated to hold the 3M socket body). Hang the steel nail of the 3M socket to the opposite side of the red mark at the “MK-3M fit-up” as illustrated within (Figure 3).

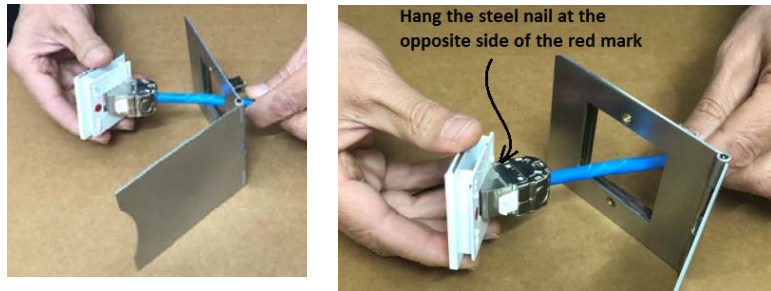


Figure 3.

**STEP#3-** Snap fit the plastic nail of the 3M socket to the red mark side of the “MK-3M fit up”; while keeping pivotal position of the steel nail fixed as is in step#2. Press firmly until you hear click! See (Figure 4).

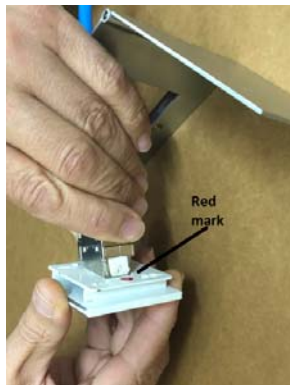


Figure 4.

**STEP#4-** Have the assembly finished as shown in (Figure 5). By inserting the snapped set inside the MK face plate opening. Notice that the socket port is flushd with the surface of the “MK-3M fit up”, connected firmly and with very aesthetic finishing!

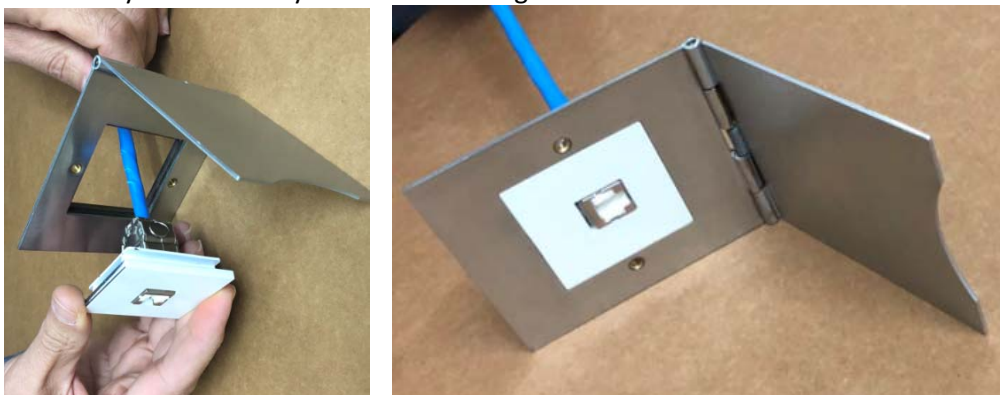


Figure 5.